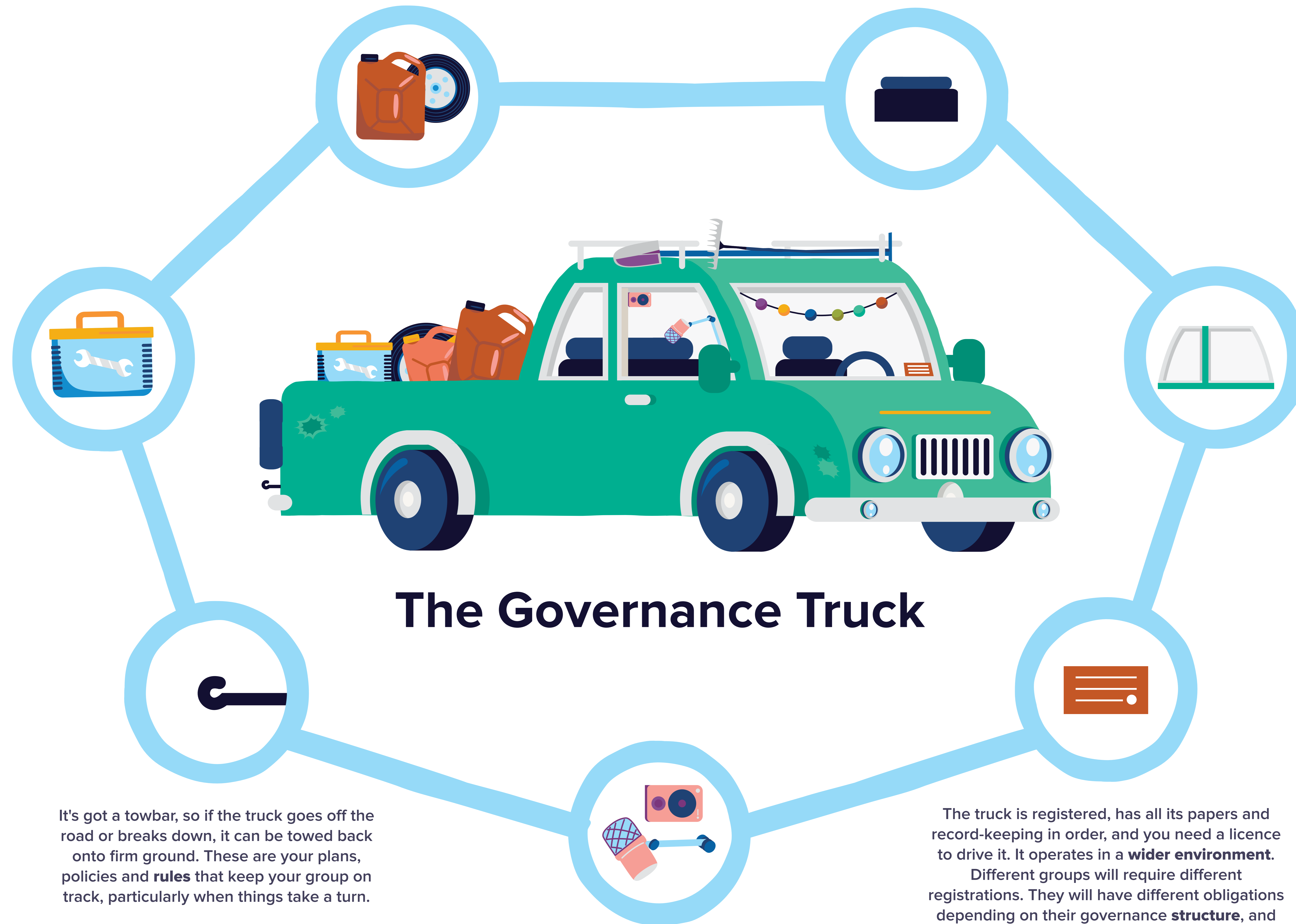


It has a jerry-can in case the truck runs out of petrol, and an extra wheel if it gets a flat tyre. These different supplies are your **resources**, which need to be managed effectively.

The truck has large bench seats – not bucket seats for individual people who think they can just drive by themselves – everybody can fit in. Governance is the responsibility of all **people**.

These tools show the importance of planning before taking a trip in the community truck. Planning and a clear **strategy** are important for effective governance.

It's got clean windows to let everyone see the road and scenery properly, and to let other cars see them. The headlights are the vision lighting up the path. It is important to ensure that your governance is transparent, and your **purpose** is clear.



The Governance Truck

It's got a towbar, so if the truck goes off the road or breaks down, it can be towed back onto firm ground. These are your plans, policies and **rules** that keep your group on track, particularly when things take a turn.

Having karaoke was something of shared importance for the people in the truck, a bit like how your own group or organisation will have certain values, traditions and **culture** that are important to them.

The truck is registered, has all its papers and record-keeping in order, and you need a licence to drive it. It operates in a **wider environment**. Different groups will require different registrations. They will have different obligations depending on their governance **structure**, and the industry they're operating in.